

EWT SLUDGE DEWATERING SYSTEM IN BAGS

Sludge baggers work for small treatment plant

The sludge bagger system is cost-effective sludge dewatering system. An slurry pump and a polymer feed system are the only energy-consuming components required. As the bags begin to fill, water penetrates through the woven material and collects for return to the head of the plant.

After this cycle is complete, the filter bags are sealed and removed and stored outdoors for another dehydration period, reducing the weight and volume of the sludge cake.

As with other dewatering processes, choosing the best flocculant is an essential prerequisite for achieving optimal results.

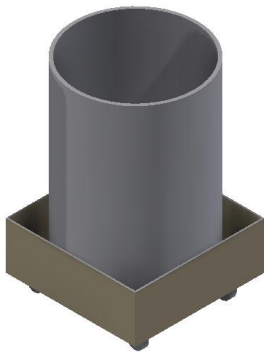


Fig. 1 Sludge dewatering large bag



Fig-2 Dewatering sludge one small bag

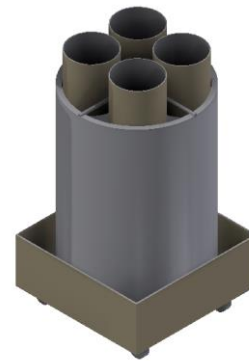


Fig.3 Dewatering sludge four small bag



Fig.4 Sludge dewatering large bag in application



Fig-5 Sludge dewatering large bag in application



Fig.6 Sludge screening in a large bag, square design